

**CAN1**  
**GUN**  
Spray Can Tool

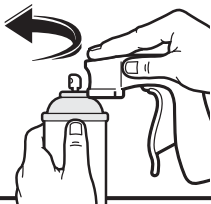


Minimum 80%  
Recycled Plastic!

Please Keep or  
Recycle This  
Card :~)

**Please Read, Understand & Follow All Instructions Before Proceeding.**  
**ALWAYS HOLD CAN & HANDLE LEVEL & KEEP FINGERS OFF OF TRIGGER WHILE ATTACHING & REMOVING.** Before spraying, point spray tip opening AWAY from you.

## ATTACH



Hold can & handle **LEVEL** as shown. **Firmly** grasp barrel between thumb & 4 fingers, then in one continuous motion, **Firmly Push** and **Rotate** bottom of handle's nosepiece under can's top ring.

## REMOVE



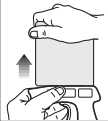
While holding can & handle **LEVEL**, **Firmly Pull & Rotate** handle away from can.

For Best Results, Always  
Remove CAN-GUN1 During  
Periods of Non-Use.

View CAN-GUN1 'Edumercial' & share  
your experiences at [cangun1.com](http://cangun1.com)

### CARD REMOVAL

Firmly pull card  
straight up & away  
from handle until  
card releases.



**CAUTION!** Do Not Shake Can  
Holding Any Part Of CAN-GUN1.

CAN-GUN1 is Exclusively  
Designed To Provide Effortless Spraying.

*Follow Spray Mfg'r's Directions.  
Use Protective Eyewear.  
Keep Out Of Reach Of Children.*



FPO 0 38965 02012 2



Thank you for purchasing CAN-GUN<sup>®</sup>1

COMMENTS, QUESTIONS & NEW PRODUCT SUGGESTIONS:

**Call Toll-Free 1-800-743-0115**

**Web:** [www.cangun1.com](http://www.cangun1.com)

**e-mail:** [info@safeworld.com](mailto:info@safeworld.com)

### Limited Lifetime Warranty

CAN-GUN1 is Warranted For Life Against  
Defects In Materials & Workmanship **ONLY**  
when attached &/or removed as instructed.

\*than other products in this category.



© 2010 SafeWorld<sup>™</sup> International Inc.  
P.O. Box 1030, Ashland, Oregon 97520 USA

U.S. DESIGN PATENT  
No. D592,953  
OTHER PATENTS PENDING

CAN-GUN<sup>®</sup>1 is a  
Registered Trademark  
of SafeWorld Int'l, Inc.